



PARK GREEN  

---

PAVILION  
BUKIT JALIL

FREEHOLD

**PARK GREEN  
PAVILION**  
BUKIT JALIL

**The Iconic 50-Acre  
BUKIT JALIL CITY**

Nestled in Bukit Jalil's most coveted and sought-after address, Bukit Jalil City is a freehold integrated township that seamlessly blends wholesome, modern conveniences with the serenity of nature. Discover direct access to world-class retail options at Pavilion Bukit Jalil, while the expansive 80-acre Bukit Jalil Recreational Park is just steps away.

Recognised as the "Best Township Development", the accolade reaffirms Bukit Jalil City as a hallmark of comprehensive and sustainable urban living.



# THE FINAL MASTERPIECE Exclusively Yours

Building on the resounding success of Bukit Jalil City, Park Green stands as the crowning and final jewel within this iconic integrated township.

This highly anticipated development offers stunning, panoramic views of the sprawling Bukit Jalil Recreational Park from your balcony, along with access to its 80-acre premier park facilities, bringing unparalleled natural beauty and exceptional value to life.



## A Hallmark of Luxurious Family Homes

Indulge in the ultimate fusion of space, style, and sophistication within these spacious family residences, ranging from 1,201 sq.ft to 1,905 sq. ft. Meticulously designed with exquisite fittings, each home offers an unparalleled sense of comfort, creating a living experience that is nothing short of extraordinary.

## The Privilege of Bespoke Concierge Services

Unlock access to exceptional concierge assistance and indulge in a lifestyle like no other. A mix of complimentary and on-demand concierge services are designed to ensure every moment is effortlessly luxurious.



## PAVILION BUKIT JALIL



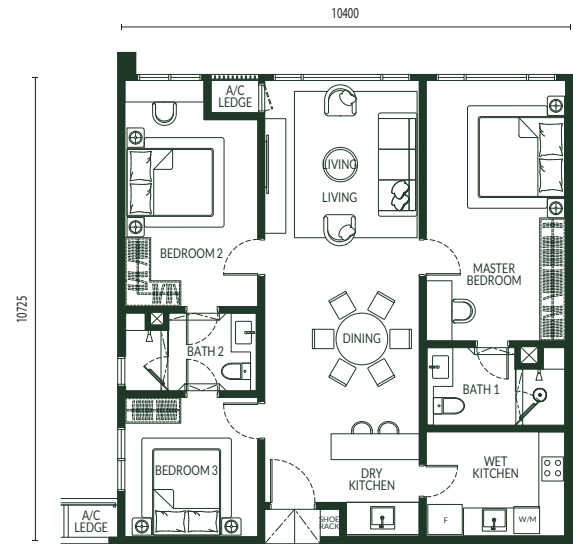
## A Dedicated Link to Pavilion Bukit Jalil

As the acclaimed FIABCI World Prix d'Excellence Awards 2024 Gold Winner in the retail category, Pavilion Bukit Jalil stands just steps away via a dedicated pedestrian bridge, offering a seamless transition from the tranquil elegance of Park Green to the vibrant energy of the mall. This proximity adds vibrancy to the residence, complemented by unparalleled retail convenience.

**Type A / A (M)**

1,201 sq. ft.

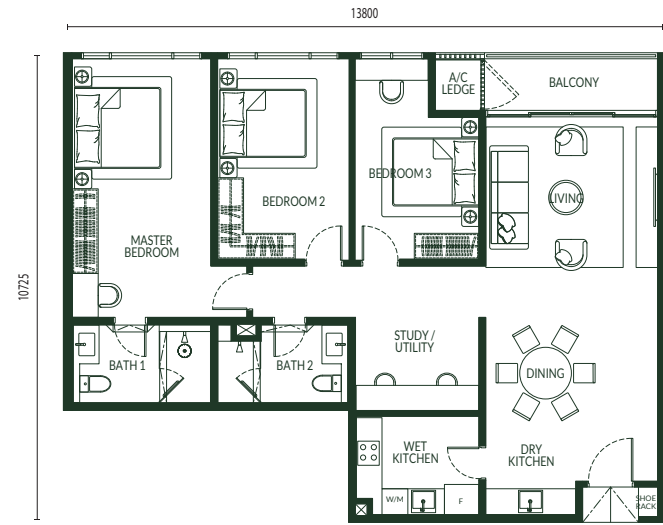
3 Bedrooms 2 Bathrooms



**Type B**

1,408 sq. ft.

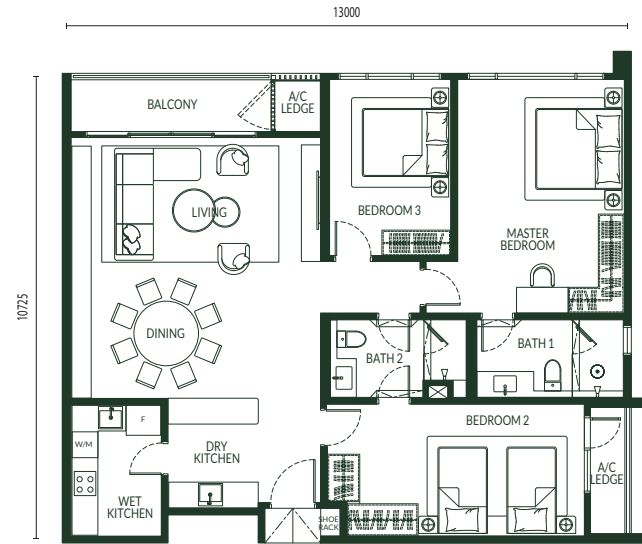
3 Bedrooms 2 Bathrooms



**Type C**

1,485 sq. ft.

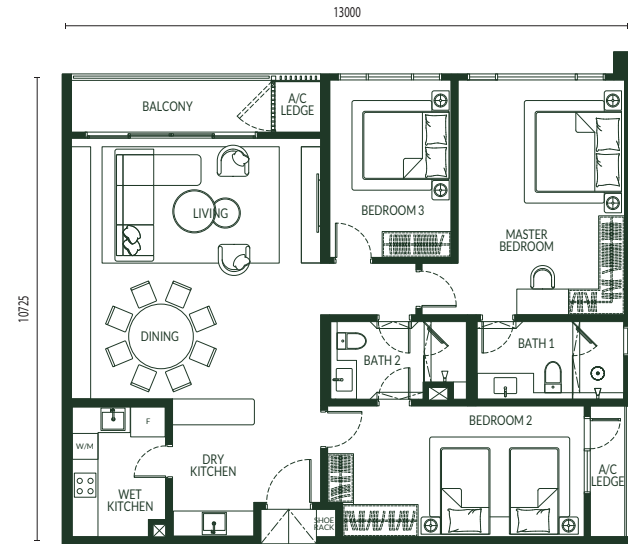
3 Bedrooms 2 Bathrooms



**Type D / D (M)**

1,501 sq. ft.

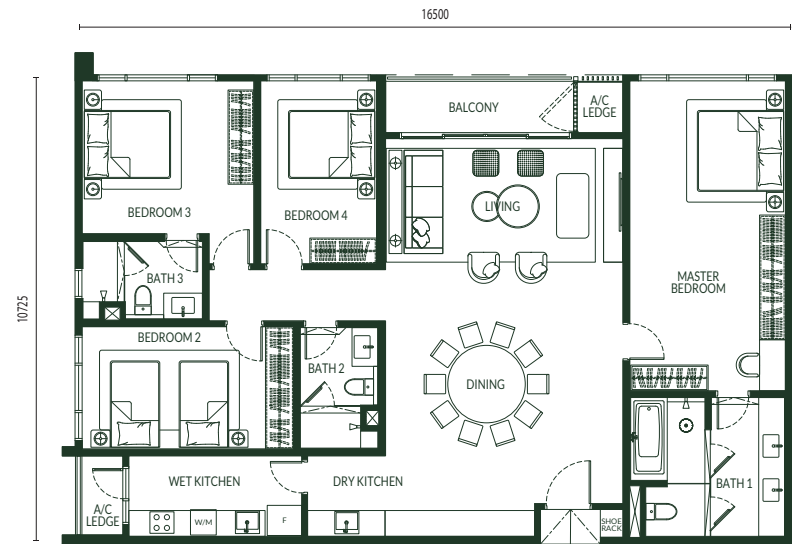
3 Bedrooms 2 Bathrooms



**Type E**

1,905 sq. ft.

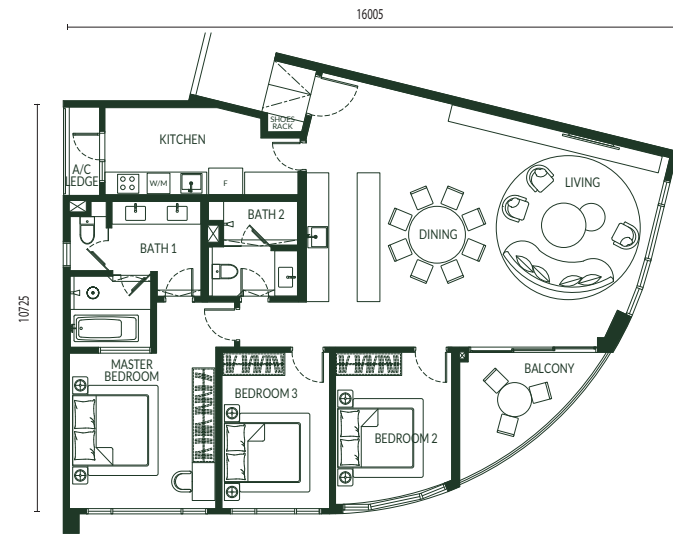
4 Bedrooms 3 Bathrooms



**Type F**

1,627 sq. ft.

3 Bedrooms 2 Bathrooms



# The Luxury of Convenience at Bukit Jalil

Situated adjacent to the cosmopolitan charm of Pavilion Bukit Jalil, Park Green elevates your lifestyle with lush surroundings and state-of-the-art amenities. In this upscale suburban enclave of Bukit Jalil, experience endless convenience and connectivity, where everything you desire is effortlessly within reach.



**MEDICAL**

1. IMU Healthcare \_\_\_\_\_ 3.2km
2. Columbia Asia Hospital \_\_\_\_\_ 3.3km

**EDUCATION**

1. SJK (C) Lai Meng \_\_\_\_\_ 950m
2. Tzu Chi International School \_\_\_\_\_ 3km
3. International Medical University (IMU) \_\_\_\_\_ 3.1km
4. Asia Pacific University (APU) \_\_\_\_\_ 4.5km

**RECREATION**

1. Bukit Jalil Recreational Park \_\_\_\_\_ 500m
2. Bukit Jalil Golf & Country Resort \_\_\_\_\_ 1.5km
3. Bukit Jalil National Stadium \_\_\_\_\_ 3km
4. Kinrara Golf Club \_\_\_\_\_ 4.2km

Disclaimer: The information contained herein is subject to change and cannot form part of an offer or contract. All renderings are artist's impressions only. All measurements are approximate. While every reasonable care has been taken in providing the information, the developer cannot be held responsible for any inaccuracy. All the above items are subject to variations, modifications and substitutions as may be required by the Authorities or recommended by the Architect or Engineer.